



AL DURA H  
RESIDENCE

Al-Durah Residence, situated directly on the coast in Ahmadi Governorate, in Abu Halifa area, along the coastal road, is the first project developed by Al-Durah Residence Company in Kuwait. This project aims to create an exclusive community that offers the highest levels of luxury and elegance, along with a rewarding investment opportunity. The project includes a ground floor and 18 additional floors, featuring restaurants, cafes, leisure activities, a health club, and dedicated service areas. This makes it the largest investment project in the region, further enhancing its presence in Kuwait City.





# ARCHITECTURE & DESIGN

Al-Durah Residence building is designed in an L-shape, maximizing the benefit of the direct sea view for the front-facing units, while side units also enjoy angled views of the sea. Each unit in the project offers some form of sea view. The building features four main entrances, with each entrance dedicated to serving only two units, ensuring both privacy and ease of access for the residents. The project is equipped with 12 elevators, 8 of which provide access to all floors, including the topmost, while the remaining 4 elevators serve up to the fourth floor only. The building consists of a total of 18 floors, ensuring spacious living and a variety of facilities for its residents.





EXTERIOR PERSPECTIVE





EXTERIOR PERSPECTIVE





EXTERIOR PERSPECTIVE





EXTERIOR PERSPECTIVE





EXTERIOR PERSPECTIVE



# FACILITIES & AMENITIES



SPA



PADEL



KIDS AREA



HOTEL LOOBY



GYM



SWIMMING POOL



VIP LOUNGE



BARBEQUE AREA



FRONT DESK



PARKING





EXTERIOR PERSPECTIVE

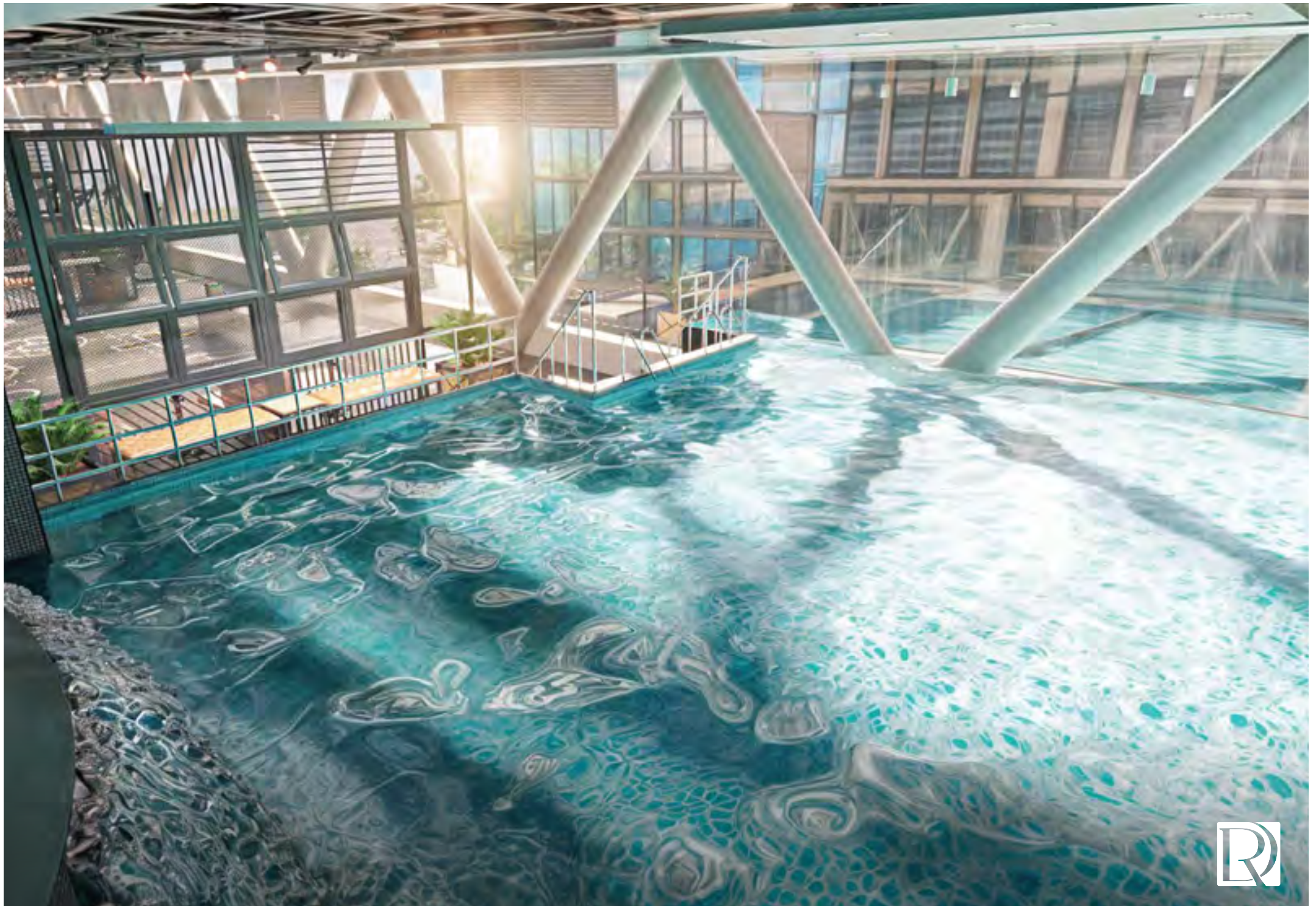






WELCOME TO  
LDURAH  
S















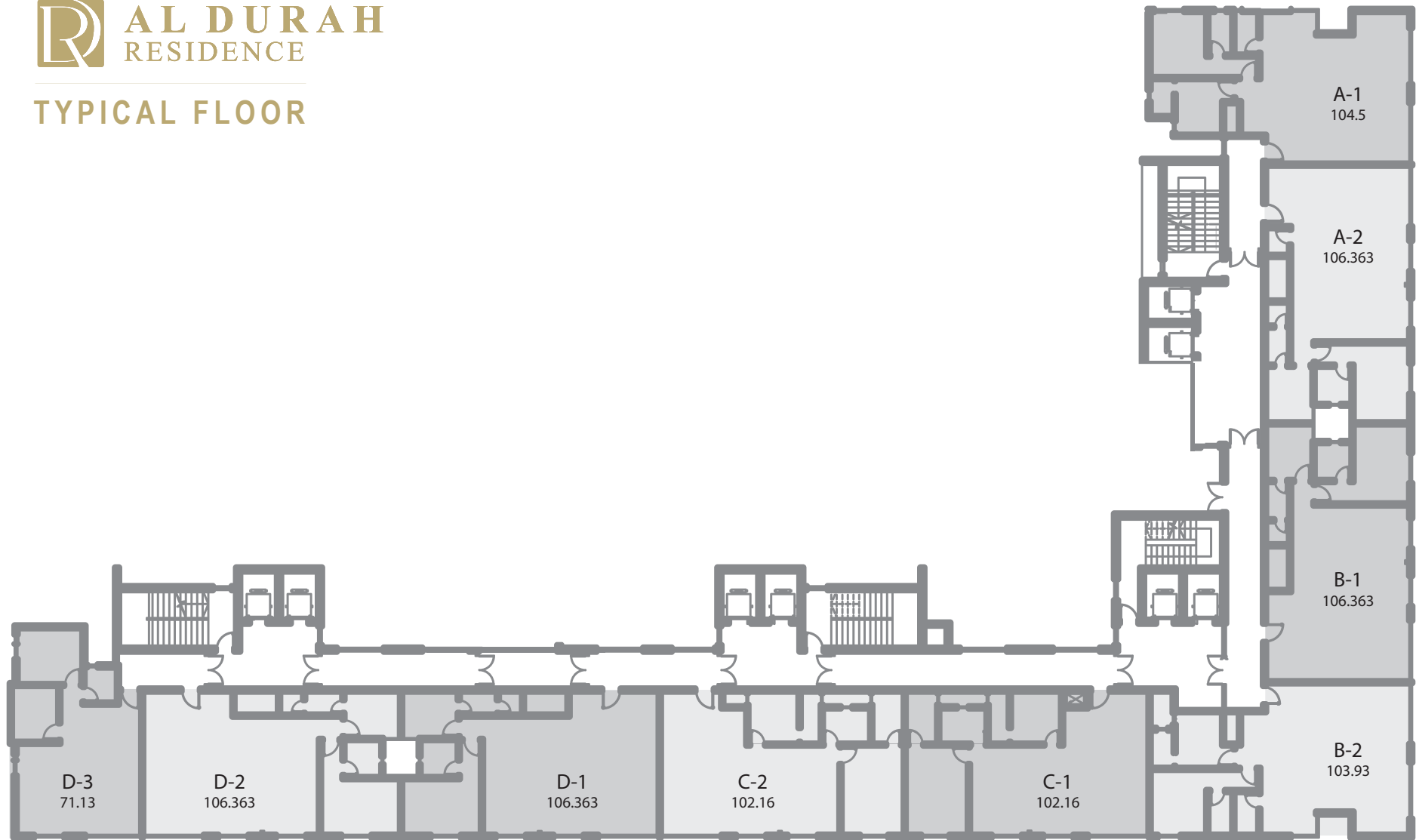


A modern, minimalist elevator lobby. Two elevators with frosted glass doors are flanked by vertical ribbed panels. A central console with a display and buttons is positioned between the elevators. The walls are covered in green foliage, and a large 'R' logo is visible on the left and right sides. The floor is dark with a white line running across it. The ceiling has track lighting.

# FLOOR PLANS



## TYPICAL FLOOR





## نموذج الشقة

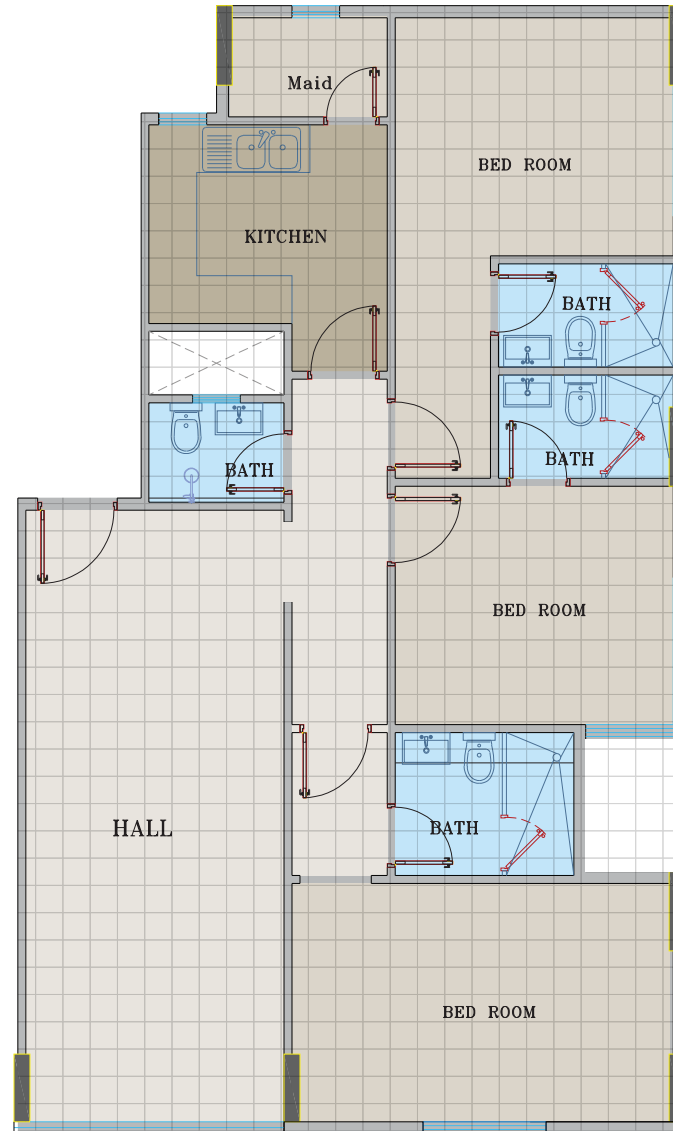
Apartment Model

# A-1

مساحة الشقة

Apartment area

## 104.5 M<sup>2</sup>

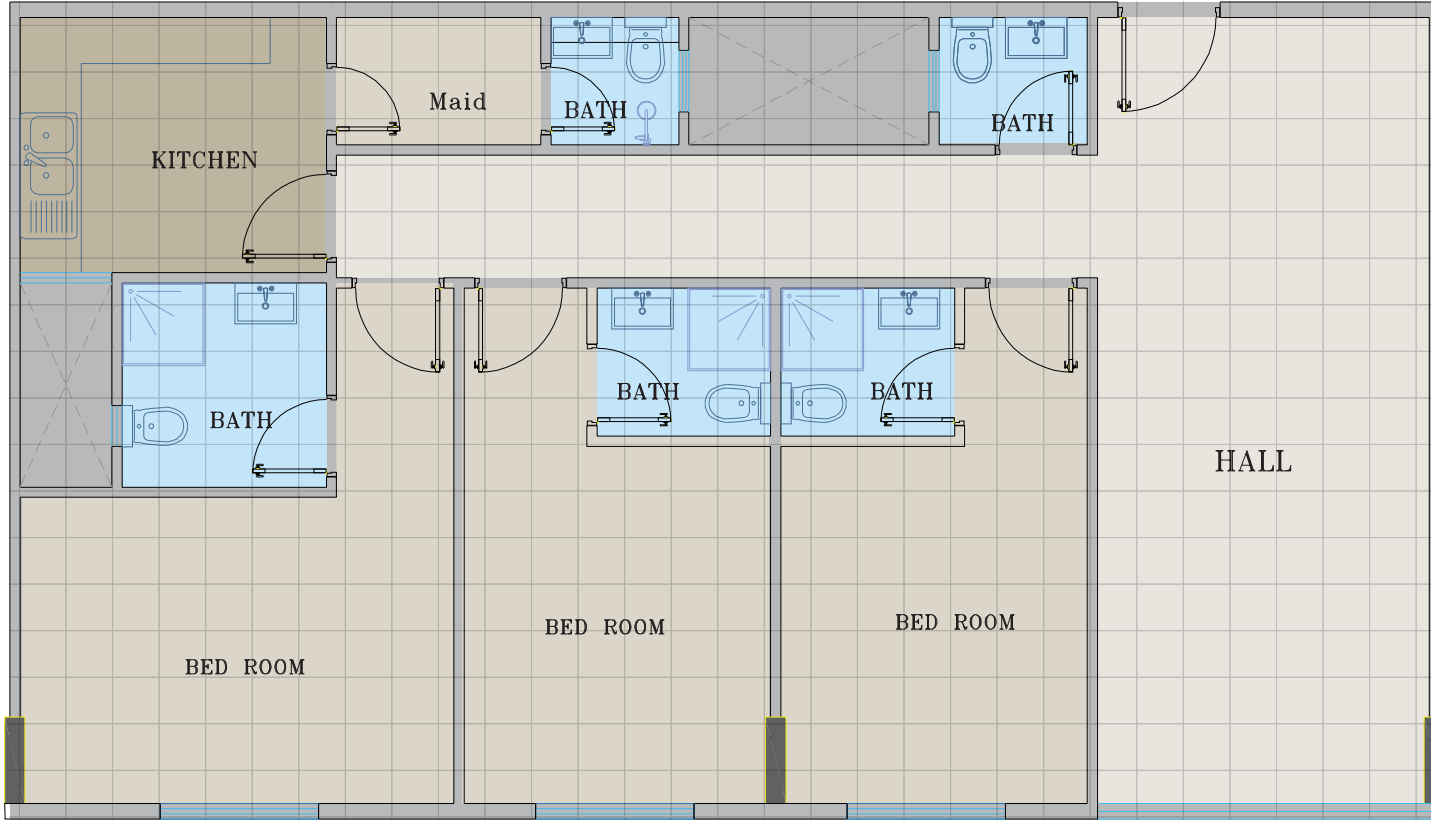


مكونات الشقة

Apartment components

- |          |   |
|----------|---|
| غرفة نوم | 3 |
| حمام     | 4 |
| مطبخ     | 1 |
| صالة     | 1 |
| ممر      | 1 |
| غسيل     | 1 |





## نموذج الشقة

Apartment Model

# A-2

مساحة الشقة

Apartment area

106.363 M<sup>2</sup>

مكونات الشقة

Apartment components

- غرفة نوم 3
- حمام 5
- مطبخ 1
- صالة 1
- ممر 1
- غسيل 1





## نموذج الشقة

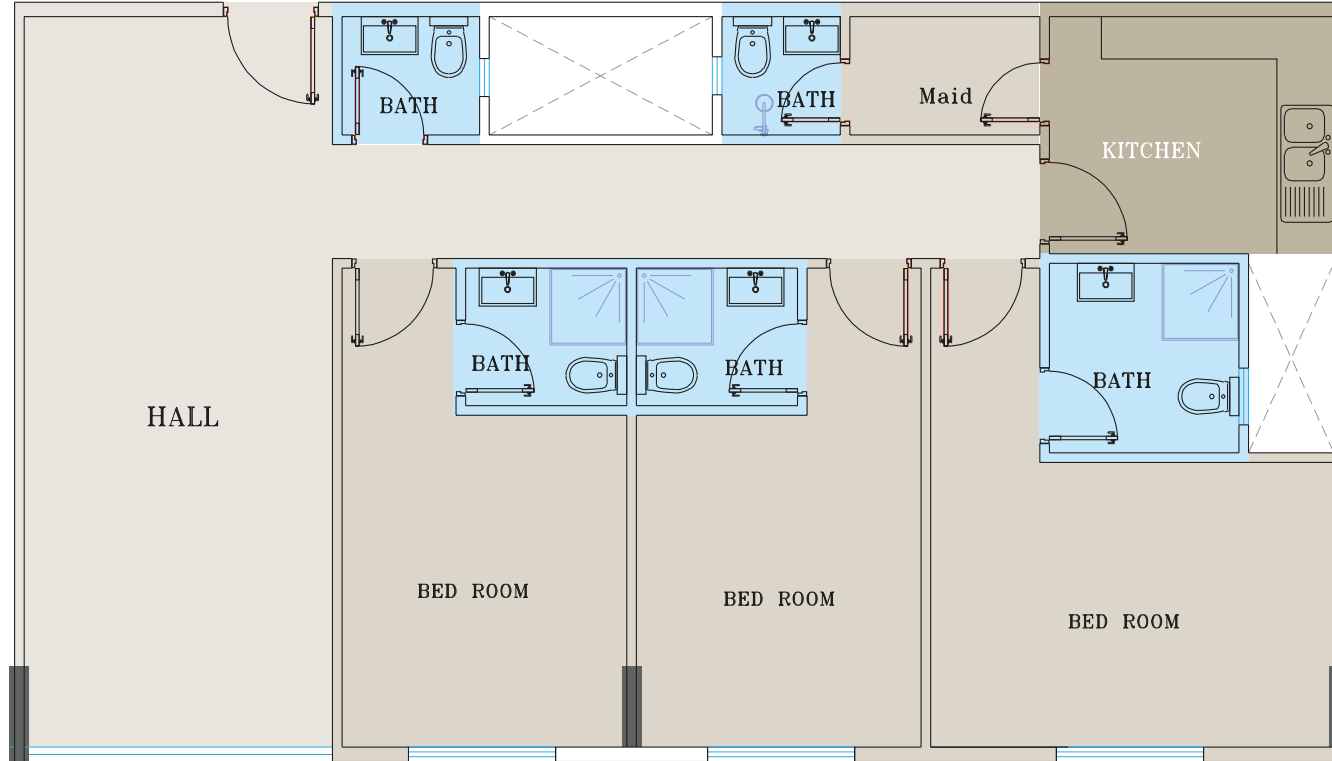
Apartment Model

# B-1

مساحة الشقة

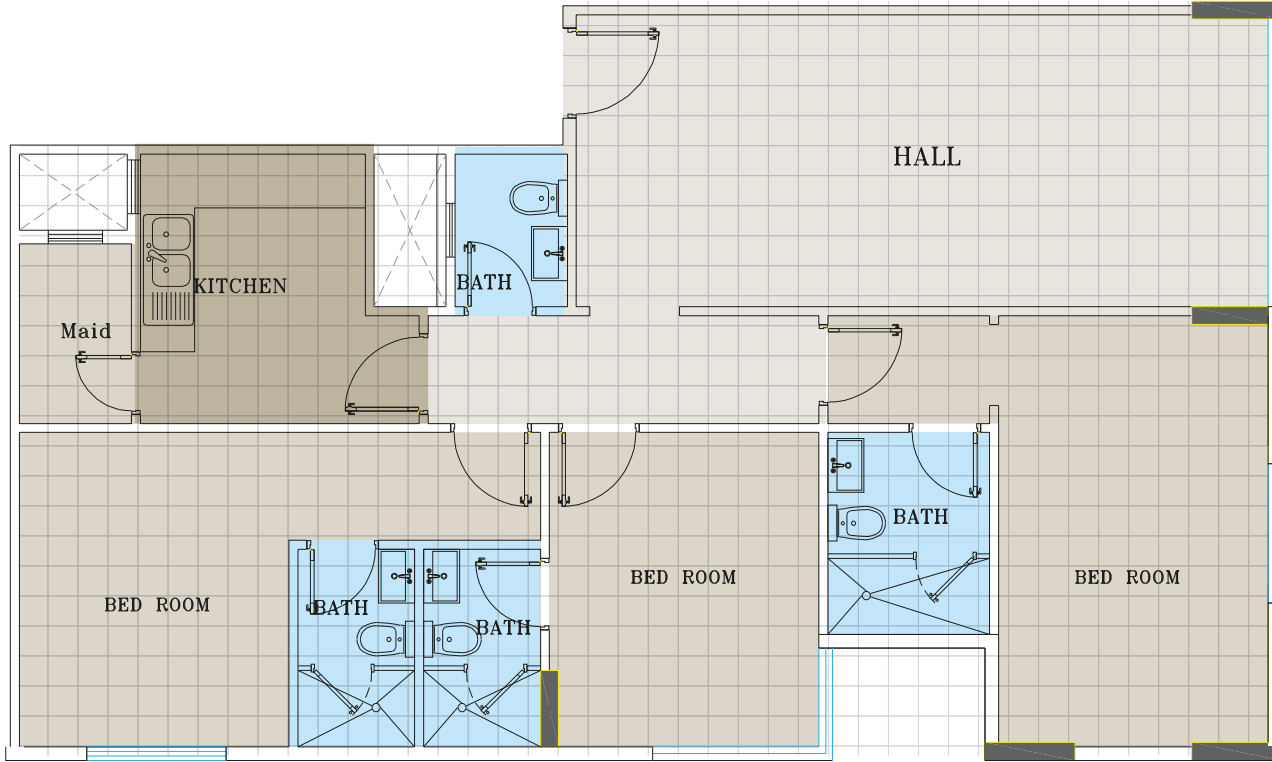
Apartment area

## 106.363 M<sup>2</sup>



- مكونات الشقة  
Apartment components
- 3 غرفة نوم
  - 5 حمام
  - 1 مطبخ
  - 1 صالة
  - 1 ممر
  - 1 غسيل





## نموذج الشقة

Apartment Model

# B-2

مساحة الشقة

Apartment area

103.92 M<sup>2</sup>

مكونات الشقة

Apartment components

- 3 غرفة نوم
- 4 حمام
- 1 مطبخ
- 1 صالة
- 1 ممر
- 1 غسيل



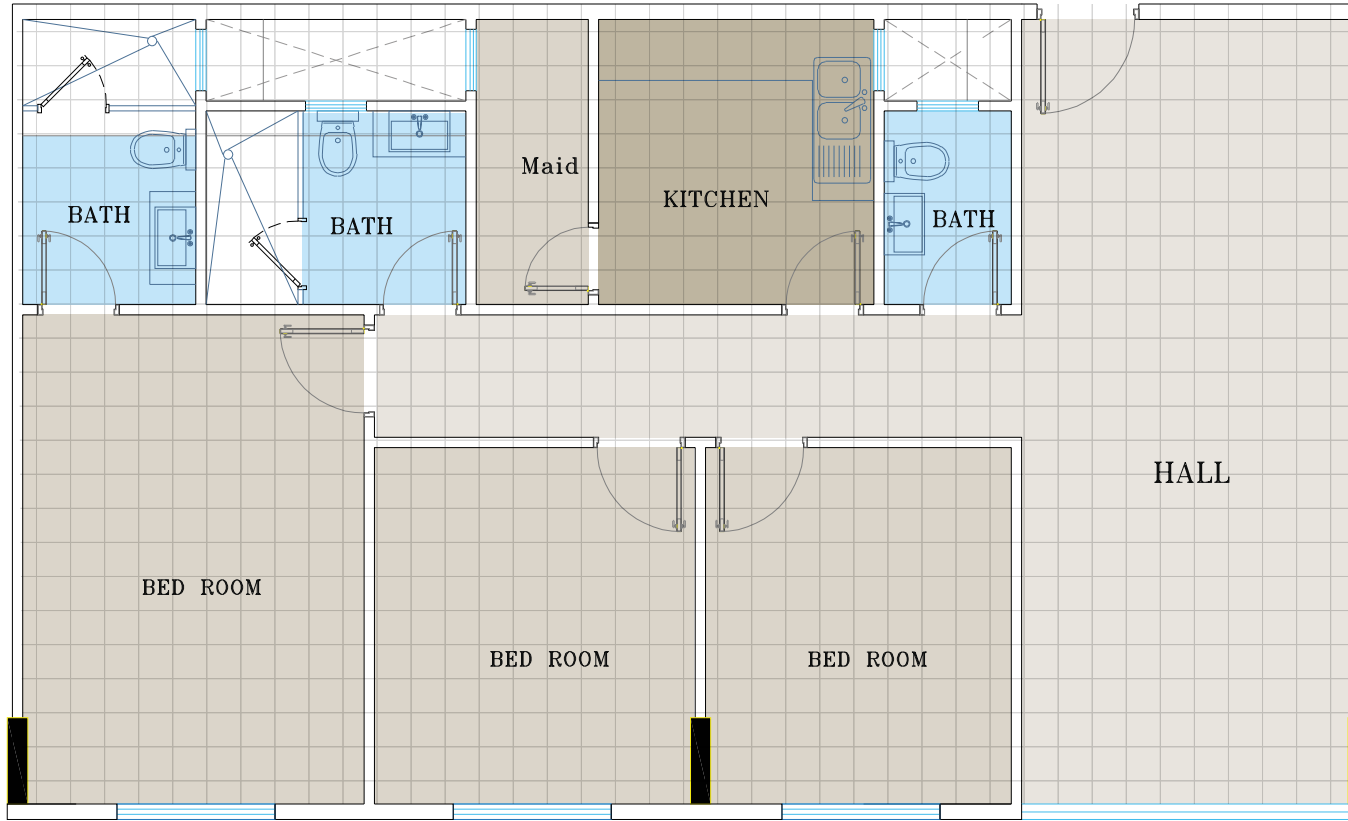


## نموذج الشقة Apartment Model

# C-1

مساحة الشقة  
Apartment area

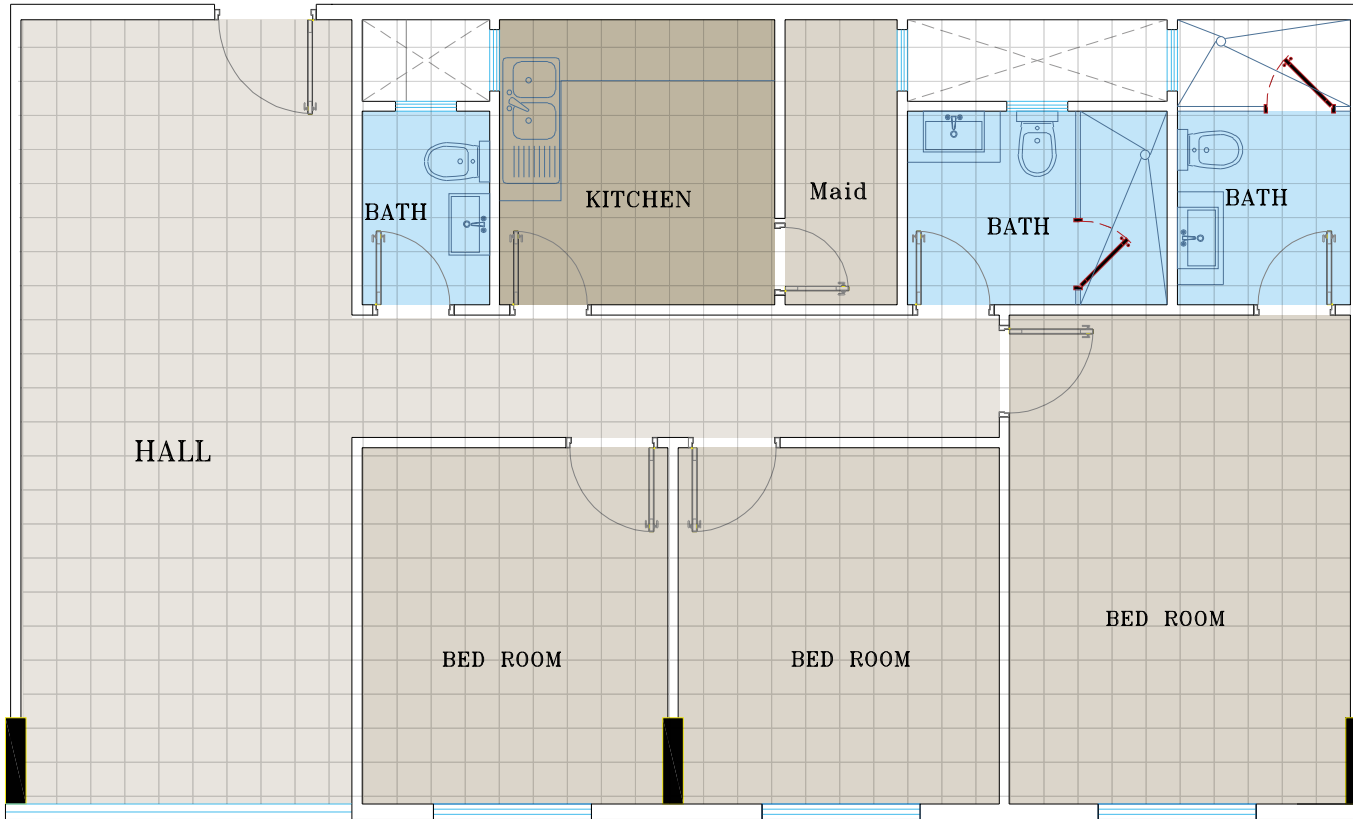
102.16 M<sup>2</sup>



مكونات الشقة  
Apartment components

غرفة نوم	3
حمام	3
مطبخ	1
صالّة	1
ممر	1
غسيل	1





## نموذج الشقة

Apartment Model

# C-2

مساحة الشقة

Apartment area

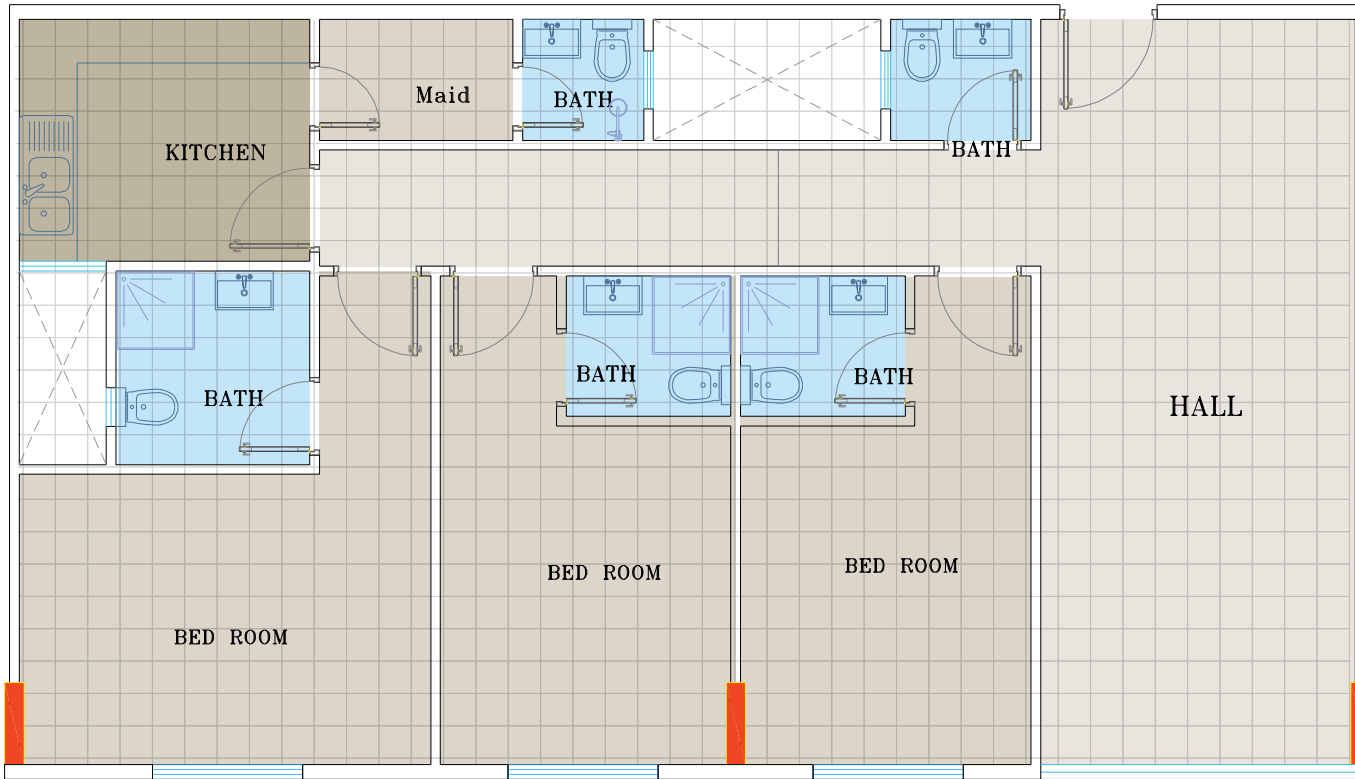
## 102.16 M<sup>2</sup>

مكونات الشقة

Apartment components

- 3 غرف نوم
- 3 حمام
- 1 مطبخ
- 1 صالة
- 1 ممر
- 1 غسيل





## نموذج الشقة

Apartment Model

# D-1

مساحة الشقة

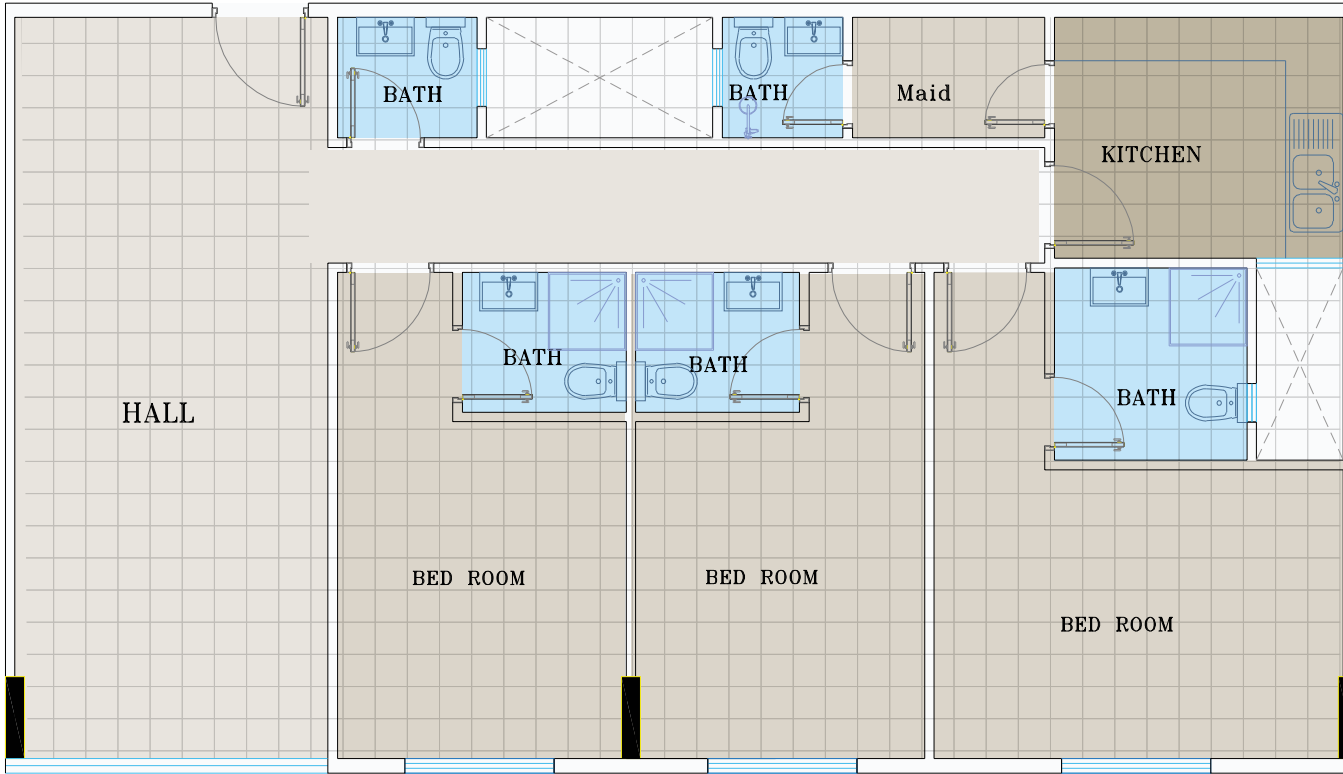
Apartment area

## 106.363 M<sup>2</sup>

مكونات الشقة  
Apartment components

غرفة نوم	3
حمام	5
مطبخ	1
صالة	1
ممر	1
غسيل	1





## نموذج الشقة

Apartment Model

# D-2

مساحة الشقة  
Apartment area

106.363 M<sup>2</sup>

مكونات الشقة  
Apartment components

- 3 غرفة نوم
- 5 حمام
- 1 مطبخ
- 1 صالة
- 1 ممر
- 1 غسيل





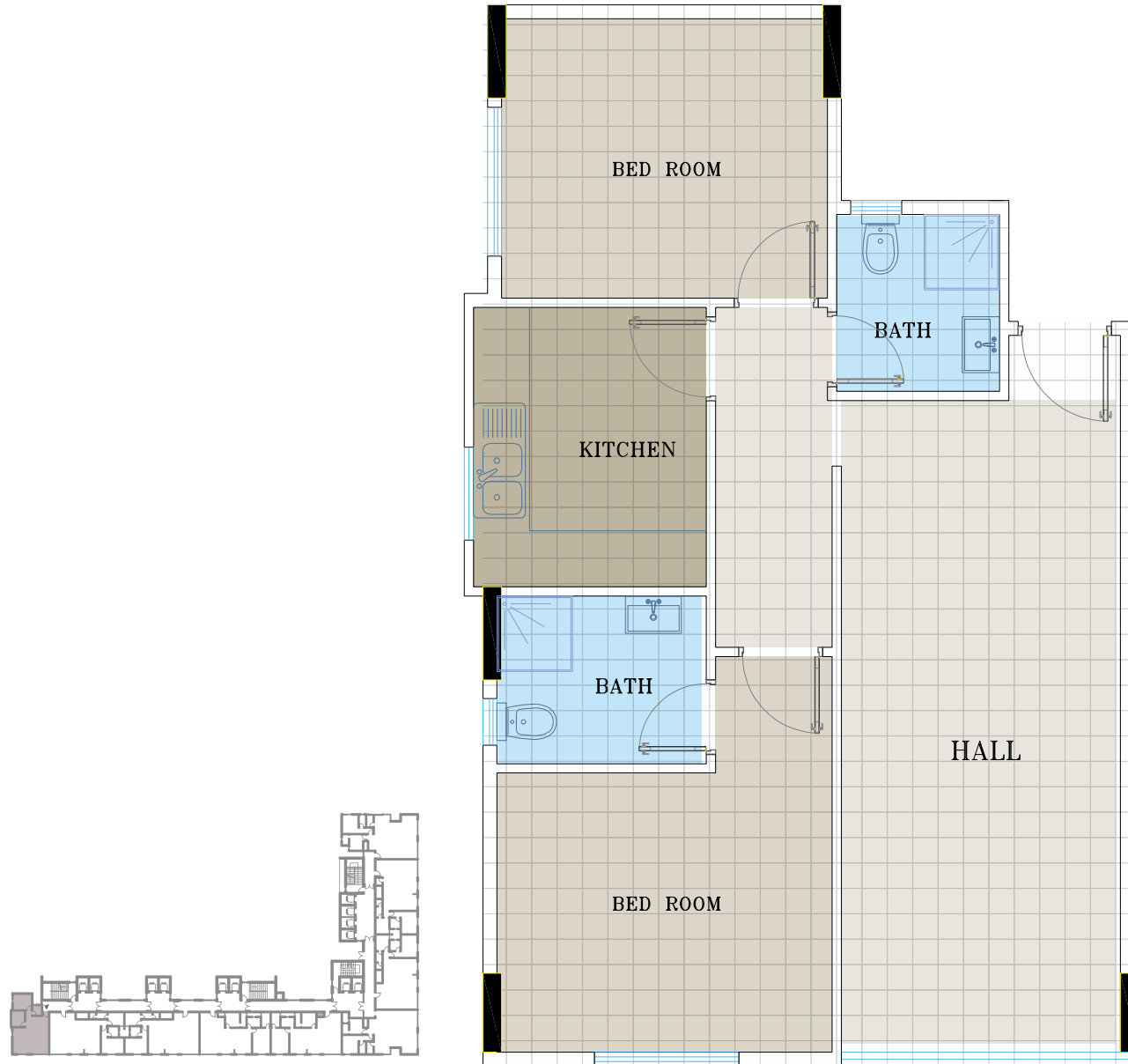
## نموذج الشقة

Apartment Model

# D-3

مساحة الشقة  
Apartment area

## 71.13 M<sup>2</sup>



مكونات الشقة  
Apartment components

غرفة نوم	2
حمام	2
مطبخ	1
صالة	1
ممر	1



ADMINISTRATIVE | إداري



الدرّة ريزيدنس  
واجهة تنبض بالحياة